



BURKECHAMBER

Growing Business. Building Community.

MEMBER BENEFITS

Investment levels ranging from \$340 - \$11,000 per year

- Promotion as a new Member in Chamber's Spotlight in the News Herald, on social media, and at Chamber board meetings
- Proud Member window decal and digital sticker to display on your website
- Complimentary Ribbon Cutting/Groundbreaking/Dedication Ceremony and Milestone Anniversary Celebration services with follow-up in Chamber Spotlight in the News Herald and The Paper
- Opportunity to provide promotional brochures in the Chamber lobby
- Opportunity to post events on the online Events Calendar, post complimentary job postings to the Chamber's website, keywords for searches, and share Member2Member deals and offers
- Optimize your online presence with a search engine optimized business listing
- Member listing in the Chamber Directory/Relocation Guide alphabetically and categorically
- Your organizations' events on Chamber Social Media when submitted

**Visibility
& Credibility**

Connections

- Invitations to over 50 annual events that offer face-to-face engagement with some of the region's most active and influential community leaders
- Participation opportunities on Chamber Committees/Boards where appropriate

Resources

- Access to the county's largest pool of business contacts (600+ businesses/organizations who, like you, want to grow their professional networks)
- Complimentary notary public service
- Preferred scheduling for complimentary business assistance with the WPCC Small Business Center
- Access to all cost-savings programs, Member2Member discounts, and discounted exporting document processing
- Complimentary two (2) hours of use of the Chamber conference room (subject to availability)
- Discounted Member rates on meeting spaces in the Chamber building
- Discount on Constant Contact for your company (\$40-80 savings annually)

Advocacy

- Your voice and advocate promoting a pro-business climate and adopting positions to influence local, state, and federal policy.
- Connections to local, state, and federal elected officials

INVESTMENT LEVELS

Please note the following: Membership Levels stack on one another

**** - applies to this level only**

TITANIUM

KEY BENEFITS

- Twelve (12) additional complimentary e-blasts (24 total) sent to 2,000+ email contacts
- Three (3) additional searchable business categories in the Chambers' online membership directory (10 total)
- Four (4) secondary/additional locations may have a complimentary listing in the Chamber directory upon request (10 total)
- Unlimited complimentary use of Chamber conference room (subject to availability)
- One (1) additional hour (6 hours total) of complimentary consultation services with the Chamber team
- One (1) foursome and one (1) hole sponsorship for the Chamber Golf Classic (upon request)
- Two (2) full tuition scholarships for Leadership Burke (upon request and subject to availability)
- Premier location at the Business Showcase
- Two (2) additional registrations to the Women's Leadership Conference (4 total)
- Two (2) additional registrations to the Annual Meeting (4 total)
- Company logo on all Chamber Electronic Correspondences

\$958.33 / month
\$11,500 / year

\$26,605 est. value

PLATINUM

KEY BENEFITS

- Five (5) additional complimentary e-blasts (12 total) sent to 2,000+ email contacts
- Two (2) additional searchable business categories in the Chambers' online membership directory (7 total)
- Two (2) secondary/additional locations may have a complimentary listing in the Chamber directory upon request (6 total)
- Unlimited Certificates of Origin (if applicable)
- Two (2) additional hours of use (8 hours total) of Chamber conference room (subject to availability)
- One (1) additional hour (5 hours total) of complimentary consultation services with the Chamber team
- Registration for two (2) players and one (1) hole sponsorship for the Chamber Golf Classic (upon request)
- **50% off tuition scholarship for Leadership Burke (upon request)
- Premier location at the Business Showcase
- Two (2) registrations to the Women's Leadership Conference (upon request)
- Two (2) registrations to the Annual Meeting (upon request)
- One (1) informational ad for your business/organization to run continuously in the Chambers' lobby, visible to all visitors
- Company Name on All Chamber Electronic Correspondences

\$529.17 / month
\$6,350 / year

\$14,900 est. value

GOLD

KEY BENEFITS

- Two (2) additional complimentary e-blasts (7 total) sent to 2,000+ email contacts
- Two (2) additional searchable business categories in the Chambers' online membership directory (5 total)
- Two (2) secondary/additional locations may have a complimentary listing in the Chamber directory upon request (4 total)
- Your business/organization will be considered a Hole Investor for the Chamber Golf Classic
- Ten (10) additional (25 total) Certificates of Origin (if applicable)
- Two (2) additional hours of use (6 hours total) of Chamber conference room (subject to availability)
- Two (2) additional hours (4 hours total) of complimentary consultation services with the Chamber team
- **25% off tuition scholarship for Leadership Burke (upon request)
- Company Name on All Chamber Electronic Correspondences

\$201.67 / month
\$2,420 / year

\$9,325 est. value



BURKECHAMBER
Growing Business. Building Community.

INVESTMENT LEVELS

Please note the following: Membership Levels stack on one another
** - applies to this level only

SILVER

KEY BENEFITS

- Three (3) additional complimentary e-blasts (5 total) sent to 2,000+ email contacts
- Two (2) additional searchable business categories in the Chambers' online membership directory (3 total)
- One (1) secondary/additional location may have a complimentary listing in the Chamber directory upon request
- \$500 complimentary radio advertising with Foothills Radio Group (value does not stack)
- Fifteen (15) complimentary Certificates of Origin (if applicable)
- Two (2) additional hours of use (4 hours total) of Chamber conference room (subject to availability)
- One (1) additional hour (2 hours total) of complimentary consultation services with the Chamber team
- Opportunity for one (1) additional employee to apply for the Chamber Ambassador program (2 total)
- Company logo on Chamber Investor Boards, displayed at all major events

\$87.50 / month
\$1,050 / year

\$5,975 est. value

BRONZE

KEY BENEFITS

- Reduced Member-exclusive rates for select Chamber programs & events
- Eligible to invest in select programs & events
- Two (2) complimentary e-blasts sent to 2,000+ email contacts
- Basic listing in our online membership directory with one searchable business category
- Complimentary invitation to one New Member Welcome event (first year only)
- Recognition at Business 4 Breakfast event as a new Member (within your first year)
- Two (2) hours of use of Chamber conference room (subject to availability)
- One (1) hour of complimentary consultation services with the Chamber team
- Opportunity for one (1) employee to apply for the Chamber Ambassador program

\$29.58 / month
\$355 / year

\$2,250 est. value

COMMUNITY NON-PROFIT

(for non-profits with 25 employees or less)

KEY BENEFITS

- All key benefits under the BRONZE investment level

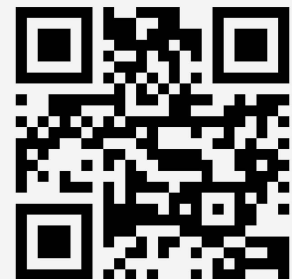
\$140 / year



"Working with the Chamber of Commerce and Small Business Center gives you a feeling that someone has your back."

Tamika Garrison
Tex's Fish Camp

"There are so many reasons to join the Chamber, but most don't realize how much the Chamber helps its members' websites show up higher on Google's organic search results. Here's why. One of the many signals Google looks for when ranking websites is credibility and authority. The Chamber is one of the most credible websites in any community. When they link to your site from their membership directory, some of their credibility "rubs off" on your site. Based on that one factor alone, your site will show up higher than a competitor that is not a member.
- Demming Bass, Google "



VISIT OUR WEBSITE

BURKECHAMBER

MEET THE CHAMBER STAFF



Tonia F. Stephenson

President & CEO
tstephenson@burkecounty.org



Kary S. Greer

Member Relations & Events Specialist
kgreer@burkecounty.org



Jenna B. Cole

Communications & Events Specialist
jcole@burkecounty.org



Morgan B. Shew

Information & Office Specialist
mshew@burkecounty.org

MEMBERSHIP FORM



Invest in your business and your community by joining the Burke County Chamber of Commerce!

Membership with the Burke County Chamber of Commerce may be tax deductible for some businesses as a necessary business expense. Fees paid to the Burke Chamber are not considered a charitable tax deduction for Federal Income tax purposes. Federal Tax ID: 56-0477413

COMPANY INFORMATION

COMPANY NAME

DATE OF ESTABLISHMENT

TYPE OF BUSINESS

NUMBER OF EMPLOYEES

MAILING ADDRESS

CITY / STATE / ZIP

PHYSICAL ADDRESS (if different from above):

CITY / STATE / ZIP

COMPANY EMAIL

COMPANY PHONE

COMPANY WEBSITE

PRIMARY CONTACT NAME / TITLE

EMAIL

PHONE

BILLING CONTACT NAME / TITLE

EMAIL

PHONE

**For additional representatives, please list names and email addresses on the back.

JOIN REASON(S) (check all that apply):

☐

Advertising Opportunities

☐

Chamber Events

☐

Visibility

☐

Leadership Development

☐

Networking

☐

Sponsorship Opportunities

MEMBERSHIP INVESTMENT INFORMATION

**If you would like to pay monthly, ask a staff member for an additional information.

MEMBERSHIP TYPE (check one):

☐
Titanium
\$958.33/mo
(\$11,500/yr)
☐
Platinum
\$529.17/mo
(\$6,350/yr)
☐
Gold
\$201.67/mo
(\$2,420/yr)
☐
Silver
\$87.50/mo
(\$1,050/yr)
☐
Bronze
\$29.58/mo
(\$355/yr)
☐
Non-Profit
(\$140/yr)
**Non-profits with less than
25 employees only.

METHOD OF PAYMENT (check one):

☐

Check

☐

Mastercard

☐

VISA

☐

Discover

**Please make checks payable to the Burke County Chamber of Commerce.

NAME ON CARD

CARD NUMBER

EXPIRATION

M M Y Y

ZIPCODE

SIGNATURE

ENROLL IN AUTOPAY? (check one):

☐

YES

☐

NO

** By enrolling in autopay, your card will be charged automatically for renewal of membership dues.

THANK YOU FOR YOUR MEMBERSHIP

www.burkecountychamber.org



WHY JOIN

The Burke County Chamber of Commerce

Chambers of Commerce are stronger than ever. By joining, you get members-only perks, exclusive advertising and networking opportunities, and a whole lot of exposure for you and your business or organization. **let us help you grow your business!**

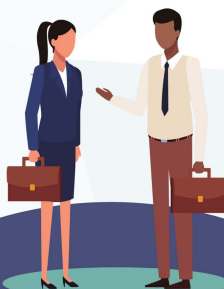
HAVE A VOICE

Gain a say in what happens in government through Chamber advocacy efforts.



NETWORKING

It's not just who you know, it's who others know. Networking is powerful.



VISIBILITY

Stand out and get noticed in your community.

*"The Chamber is one of the most credible websites in any community."
Demming Bass, Google*



EXCLUSIVE MEMBERSHIP BENEFITS

CREDIBILITY

Raise your reputation through membership.



DISCOUNTS

Increase your purchasing power through members-only discounts and perks.*

**Ask about current discounts that are available.*



LEARNING

Get a competitive edge over non-members with exclusive training opportunities on a variety of hot topics.



(828) 437-3021

INFO@BURKECOUNTY.ORG